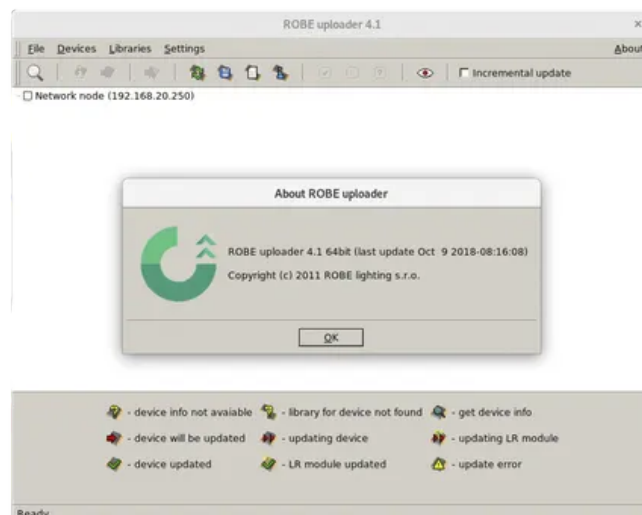


# ROBE Uploader

ROBE Uploader is a cross platform desktop software for automatized software update of Robe fixtures. It can take advantage of RDM support and Ethernet ports if present in the units. It is available for Windows, Linux and macOS. The Robe Uploader should not be used with devices that utilize the RNS3 Display System; instead, please use the **Robe Toolkit**.



# Technical Specification

## Key features

- Update of multiple units in parallel over Ethernet network
- Support for multiple RUNIT, RUNIT/WTX interfaces
- Smart selection of units before update
- Ethernet based software update (no RUNIT interface required) (you need to be connected to your devices via local network for this feature to work) (Display system 2.0 and higher)
- Remote triggering of update mode, get information about device, update
- Auto update of fixture software libraries via Internet and improved download process notification (you need to be connected to the Internet for this feature to work)
- Highlight via RDM to identify units on the truss
- RUNIT based updates can utilize RDM based transfer and pass through RDM enabled switches (Display system 3.0 and higher)
- Update of LumenRadion Wireless CRMX PCB via Ethernet network or via RUNIT interfaces
- Selection of network interface if multiple NIC are present
- Update of LiteWare HO2 and LiteWare Satellite2 units over CRMX wireless (these are the only fixtures that utilize wireless based update)
- RUNIT based updates can utilize RDM based transfer and pass through RDM enabled switches (Display system 3.0 and higher)
- Ethernet based update on custom set IP range (Display system 3.0 and higher)