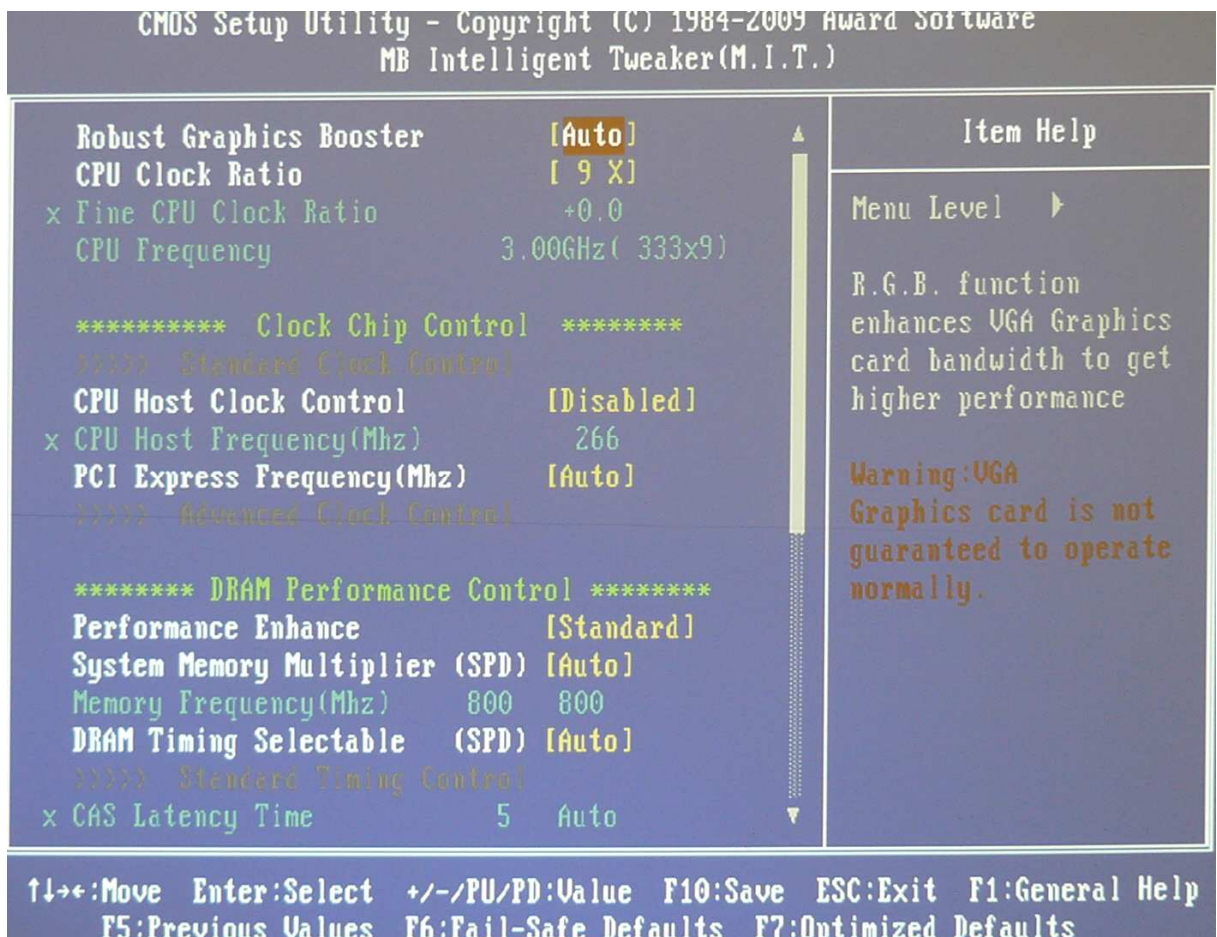
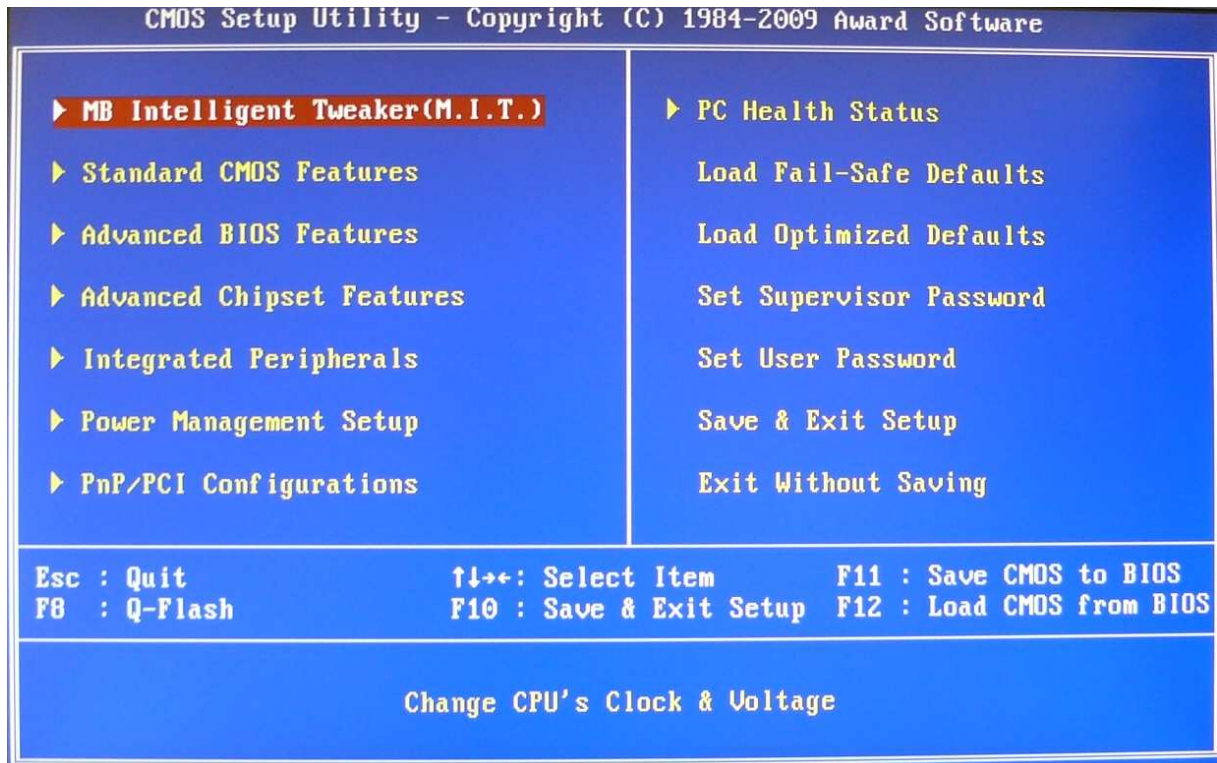


Setting BIOS Gigabyte GA-G41M-ES2H

Bios version F1



CMOS Setup Utility - Copyright (C) 1984-2009 Award Software
Standard CMOS Features

		Item Help
Date (mm:dd:yy)	Mon, Dec 14 2009	Menu Level ▶ Change the day, month, year <Week> Sun. to Sat. <Month> Jan. to Dec. <Day> 1 to 31 (or maximum allowed in the month) <Year> 2000 to 2099
Time (hh:mm:ss)	9 : 44 : 42	
▶ IDE Channel 0 Master	[ST9160412AS]	
▶ IDE Channel 0 Slave	[None]	
▶ IDE Channel 1 Master	[None]	
▶ IDE Channel 1 Slave	[None]	
Drive A	[None]	
Floppy 3 Mode Support	[Disabled]	
Halt On	[All , But Keyboard]	
Base Memory	640K	
Extended Memory	1022M	
Total Memory	1024M	
↑↓:Move Enter:Select +/-/PU/PD:Value F10:Save ESC:Exit F1:General Help F5:Previous Values F6:Fail-Safe Defaults F7:Optimized Defaults		

CMOS Setup Utility - Copyright (C) 1984-2009 Award Software
Advanced BIOS Features

		Item Help
▶ Hard Disk Boot Priority	[Press Enter]	Menu Level ▶ Select Hard Disk Boot Device Priority.
First Boot Device	[Hard Disk]	
Second Boot Device	[Hard Disk]	
Third Boot Device	[Disabled]	
Password Check	[Setup]	
HDD S.M.A.R.T. Capability	[Enabled]	
Limit CPUID Max. to 3	[Disabled]	
No-Execute Memory Protect	[Enabled]	
CPU Enhanced Halt (C1E)	[Enabled]	
C2/C2E State Support	[Disabled]	
CPU Thermal Monitor 2(TM2)	[Enabled]	
CPU EIST Function	[Enabled]	
Virtualization Technology	[Enabled]	
Delay For HDD (Secs)	[0]	
Backup BIOS Image to HDD	[Disabled]	
↑↓:Move Enter:Select +/-/PU/PD:Value F10:Save ESC:Exit F1:General Help F5:Previous Values F6:Fail-Safe Defaults F7:Optimized Defaults		

CMOS Setup Utility - Copyright (C) 1984-2009 Award Software
Hard Disk Boot Priority

1. USB-HDD0 : KingstonDataTraveler 2
2. Ch0 M. : ST9160412AS
3. Bootable Add-in Cards

Item Help

Menu Level >>

Use <↑> or <↓> to select a device, then press <+> to move it up, or <-> to move it down the list. Press <ESC> to exit this menu.

↑↓:Move

PU/PD/+/-:Change Priority

F10:Save

ESC:Exit

CMOS Setup Utility - Copyright (C) 1984-2009 Award Software
Advanced Chipset Features

Onboard UGA [Enable If No Ext PEG]
Init Display First [PEG]

Item Help

Menu Level >

Enable If No Ext PEG
Disable onboard GPU if GPU exists in the PEG slot

Always Enable
Enable onboard GPU even GPU exists in the PEG slot

↑↓+:Move Enter:Select +/-/PU/PD:Value F10:Save ESC:Exit F1:General Help
F5:Previous Values F6:Fail-Safe Defaults F7:Optimized Defaults

CMOS Setup Utility - Copyright (C) 1984-2009 Award Software
Integrated Peripherals

		Item Help
On-Chip Primary	PCI IDE [Enabled]	
On-Chip Secondary	PCI IDE [Enabled]	
On-Chip SATA Mode	[Auto]	Menu Level ▶
x PATA IDE Set to	Ch.1 Master/Slave	
SATA Port0/2 Set to	Ch.0 Master/Slave	[Enable] or [Disable]
SATA Port1/3 Set to	Disable	Legacy support of USB Mouse.
Azalia Codec	[Auto]	
Onboard H/W LAN	[Enabled]	
Green LAN	[Disabled]	
▶ SMART LAN	[Press Enter]	
Onboard LAN Boot ROM	[Disabled]	
Onboard Serial Port 1	[3F8/IRQ4]	
Onboard Parallel Port	[378/IRQ7]	
Parallel Port Mode	[SPP]	
USB 1.0 Controller	[Enabled]	
USB 2.0 Controller	[Enabled]	
USB Keyboard Function	[Enabled]	
USB Mouse Function	[Enabled]	
USB Storage Function	[Enabled]	

↑↓←→:Move Enter:Select +/-/PU/PD:Value F10:Save ESC:Exit F1:General Help
F5:Previous Values F6:Fail-Safe Defaults F7:Optimized Defaults

CMOS Setup Utility - Copyright (C) 1984-2009 Award Software
Power Management Setup

		Item Help
ACPI Suspend Type	[S3(STR)]	
Soft-Off by PWR-BTTN	[Instant-Off]	
PME Event Wake Up	[Enabled]	Menu Level ▶
Power On by Ring	[Enabled]	
Resume by Alarm	[Disabled]	[Soft-Off]
x Date(of Month) Alarm	Everyday	Always in off state when AC back
x Time(hh:mm:ss) Alarm	0 : 0 : 0	
HPET Support	[Enabled]	
HPET Mode	[32-bit mode]	[Full-On]
Power On By Mouse	[Disabled]	Always power on system when AC back
Power On By Keyboard	[Disabled]	
x KB Power ON Password	Enter	
AC Back Function	[Full-On]	[Memory]
Energy Using Products(EUP)	[Disabled]	System power on depends on the status before AC lost

↑↓←→:Move Enter:Select +/-/PU/PD:Value F10:Save ESC:Exit F1:General Help
F5:Previous Values F6:Fail-Safe Defaults F7:Optimized Defaults

CMOS Setup Utility - Copyright (C) 1984-2009 Award Software
PC Health Status

		Item Help
Reset Case Open Status	[Disabled]	
Case Opened	Yes	
Vcore	1.268V	Menu Level ▶
DDR18V	1.920V	
+3.3V	3.344V	[Disabled]
+12V	11.985V	Don't reset case open status
Current CPU Temperature	39°C	
Current CPU FAN Speed	1454 RPM	
Current SYSTEM FAN Speed	0 RPM	[Enabled]
CPU Warning Temperature	[Disabled]	Clear case open status and set to be Disabled at next boot
CPU FAN Fail Warning	[Disabled]	
SYSTEM FAN Fail Warning	[Disabled]	
CPU Smart FAN Control	[Enabled]	

↑↓←→:Move Enter:Select +/-/PU/PD:Value F10:Save ESC:Exit F1:General Help
F5:Previous Values F6:Fail-Safe Defaults F7:Optimized Defaults

CMOS Setup Utility - Copyright (C) 1984-2009 Award Software

▶ MB Intelligent Tweaker(M.I.T.)	▶ PC Health Status
▶ Standard CMOS Features	Load Fail-Safe Defaults
▶ Advanced BIOS Features	Load Optimized Defaults
▶ Advanced Chipset Features	Set Supervisor Password
▶ Integrated Peripherals	Set User Password
▶ Power Management Setup	Save & Exit Setup
▶ PnP/PCI Configurations	Exit Without Saving

Esc : Quit ↑↓←→: Select Item F11 : Save CMOS to BIOS
F8 : Q-Flash F10 : Save & Exit Setup F12 : Load CMOS from BIOS

Save Data to CMOS