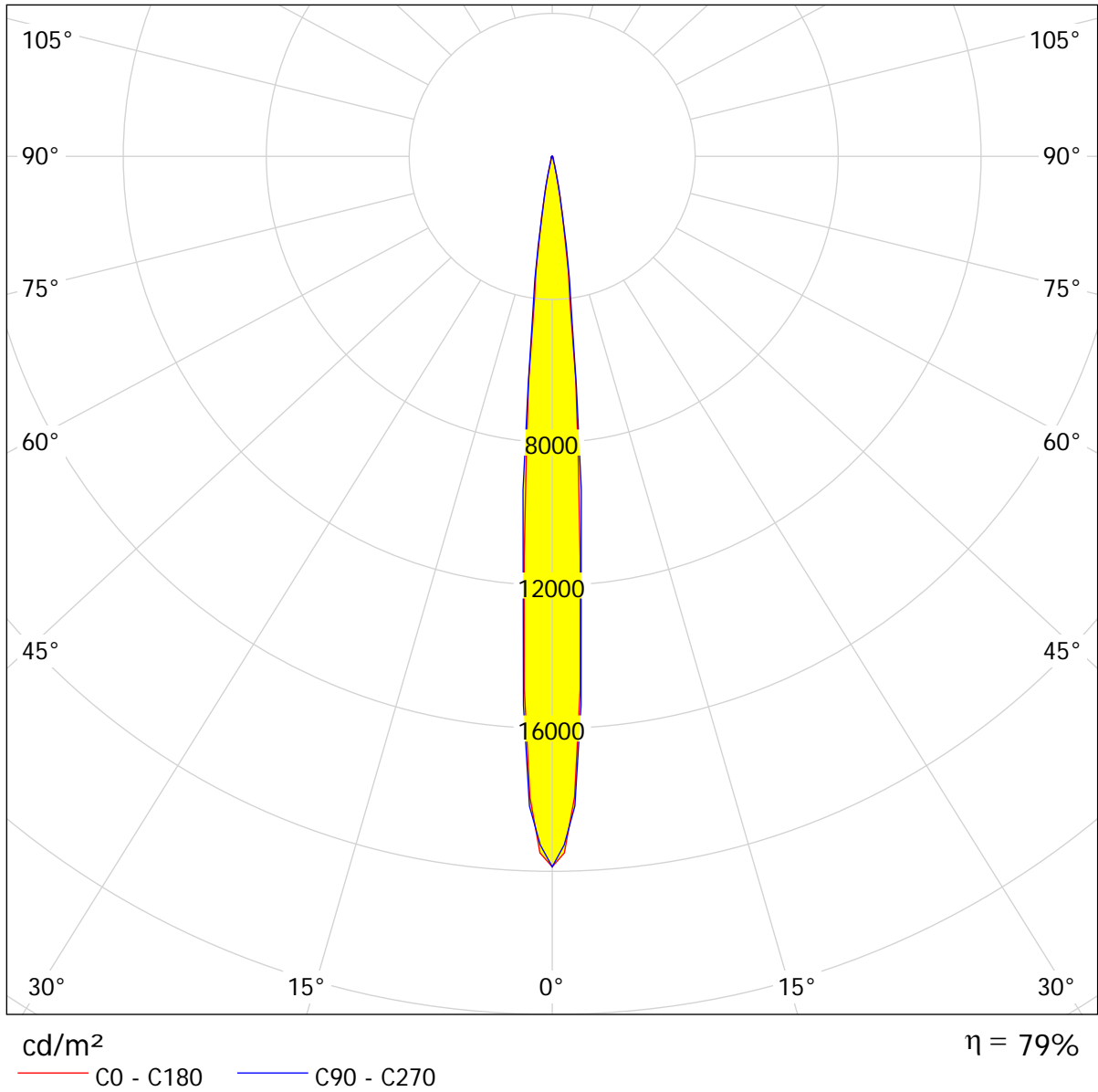


Operator  
Telephone  
Fax  
e-Mail

### Robe P CityScape Xtreme RGBCW 9° HALF / LDC (Polar)

Luminaire: Robe P CityScape Xtreme RGBCW 9° HALF  
Lamps: 94 x Luxeon K2



Operator  
 Telephone  
 Fax  
 e-Mail

### Robe P CityScape Xtreme RGBCW 9° HALF / Cone Diagram

Luminaire: Robe P CityScape Xtreme RGBCW 9° HALF  
 Lamps: 94 x Luxeon K2

0.5	0.08 0.08	E(0°) 390304 E(C90) 4.7° 195520 E(C0) 4.4° 195992
1.0	0.16 0.15	E(0°) 97576 E(C90) 4.7° 48880 E(C0) 4.4° 48998
1.5	0.25 0.23	E(0°) 43367 E(C90) 4.7° 21724 E(C0) 4.4° 21777
2.0	0.33 0.31	E(0°) 24394 E(C90) 4.7° 12220 E(C0) 4.4° 12250
2.5	0.41 0.38	E(0°) 15612 E(C90) 4.7° 7821 E(C0) 4.4° 7840
3.0	0.49 0.46	E(0°) 10842 E(C90) 4.7° 5431 E(C0) 4.4° 5444

Distance [m]

Cone Diameter [m]

Illuminance [lx]

- C0 - C180 (Half-value Angle: 8.8°)
- C90 - C270 (Half-value Angle: 9.4°)

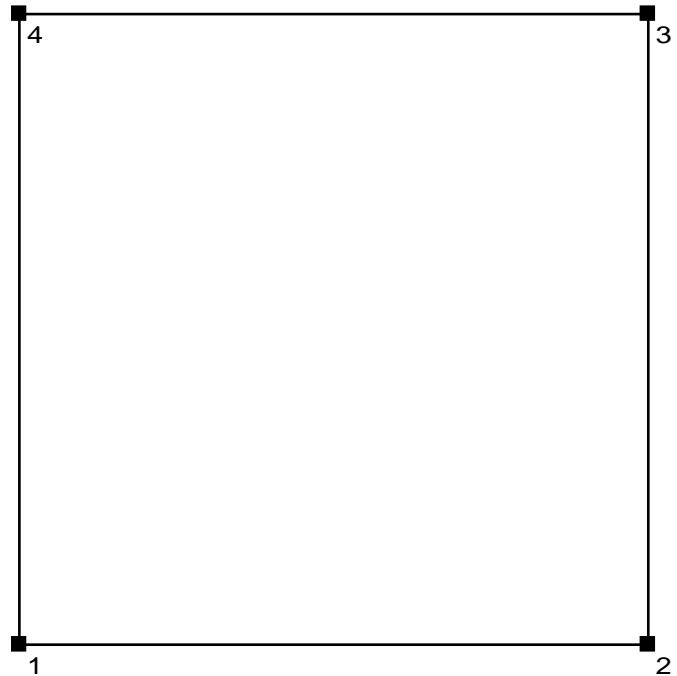
Operator  
Telephone  
Fax  
e-Mail

## Room 1 / Input Protocol

Height of working plane: 0.850 m  
Boundary Zone: 0.000 m

Maintenance factor: 0.80

Height of Room: 2.800 m  
Ground area: 25.00 m<sup>2</sup>



Surface	Rho [%]	from ( [m]   [m] )	towards ( [m]   [m] )	Length [m]
Floor	20	/	/	/
Ceiling	70	/	/	/
Wall 1	50	( 0.000   0.000 )	( 5.000   0.000 )	5.000
Wall 2	50	( 5.000   0.000 )	( 5.000   5.000 )	5.000
Wall 3	50	( 5.000   5.000 )	( 0.000   5.000 )	5.000
Wall 4	50	( 0.000   5.000 )	( 0.000   0.000 )	5.000

Operator  
Telephone  
Fax  
e-Mail

## Room 1 / Photometric Results

Total Luminous Flux: 4910 lm  
Total Load: 298.0 W  
Maintenance factor: 0.80  
Boundary Zone: 0.000 m

Surface	Average illuminances [lx]			Reflection factor [%]	Average luminance [cd/m <sup>2</sup> ]
	direct	indirect	total		
Workplane	133	9.56	143	/	/
Floor	123	8.53	131	20	8.35
Ceiling	0.00	16	16	70	3.68
Wall 1	1.13	12	13	50	2.08
Wall 2	0.97	12	13	50	2.05
Wall 3	1.13	12	13	50	2.08
Wall 4	0.97	12	13	50	2.05

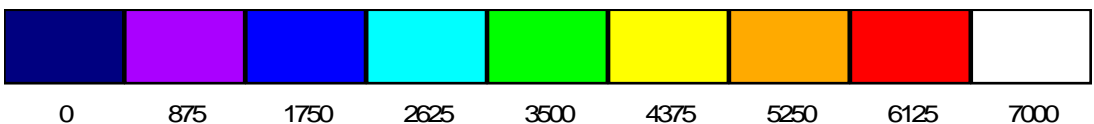
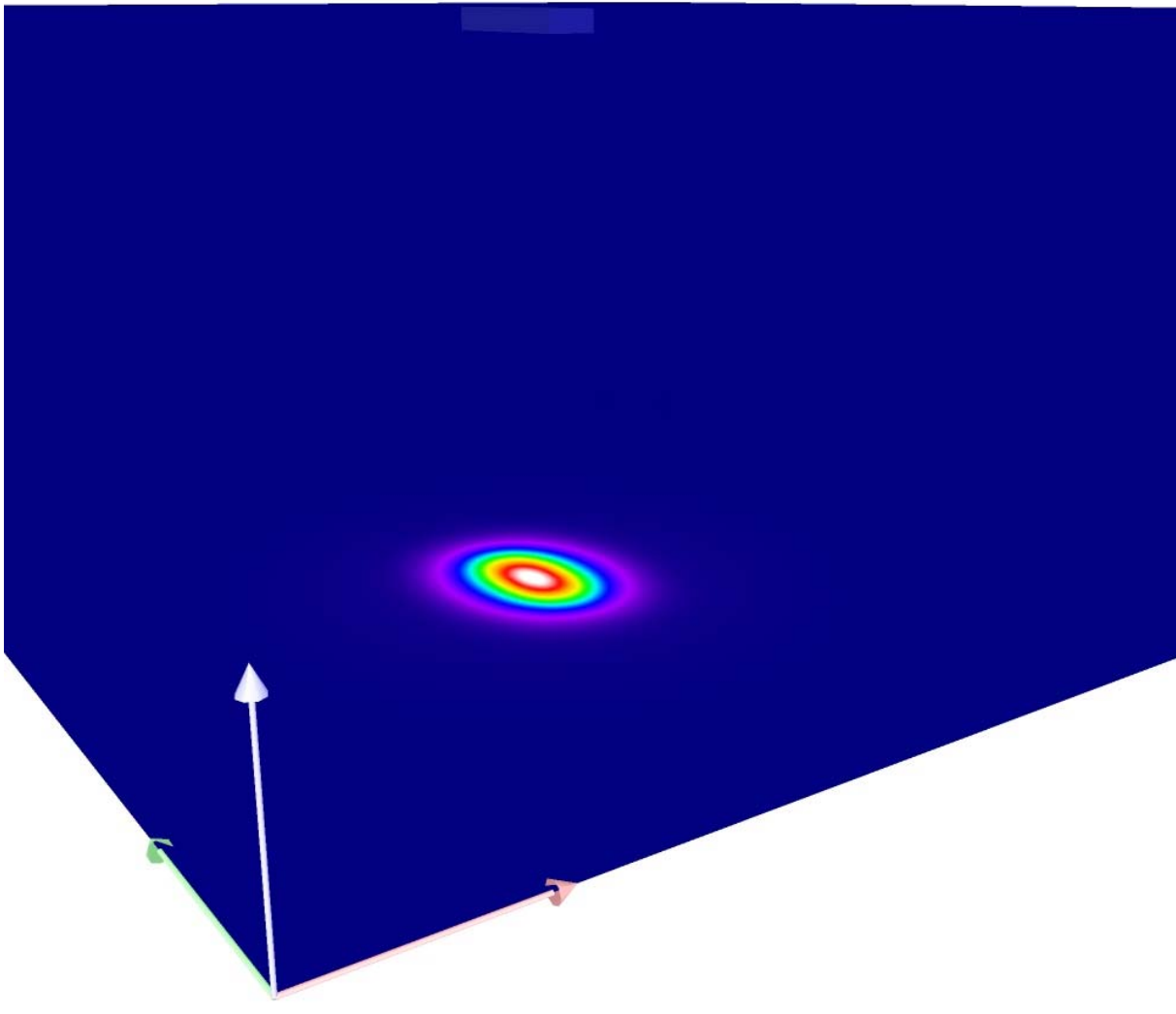
Uniformity on the working plane  
u<sub>0</sub>: 0.051 (1:20)  
E<sub>min</sub> / E<sub>max</sub>: 0.001 (1:1602)

**UGR**      Lengthways-      Across      to luminaire axis  
Left Wall      <10      <10  
Lower Wall      <10      <10  
(CIE, SHR = 0.25.)

Specific connected load: 11.92 W/m<sup>2</sup> = 8.36 W/m<sup>2</sup>/100 lx (Ground area: 25.00 m<sup>2</sup>)

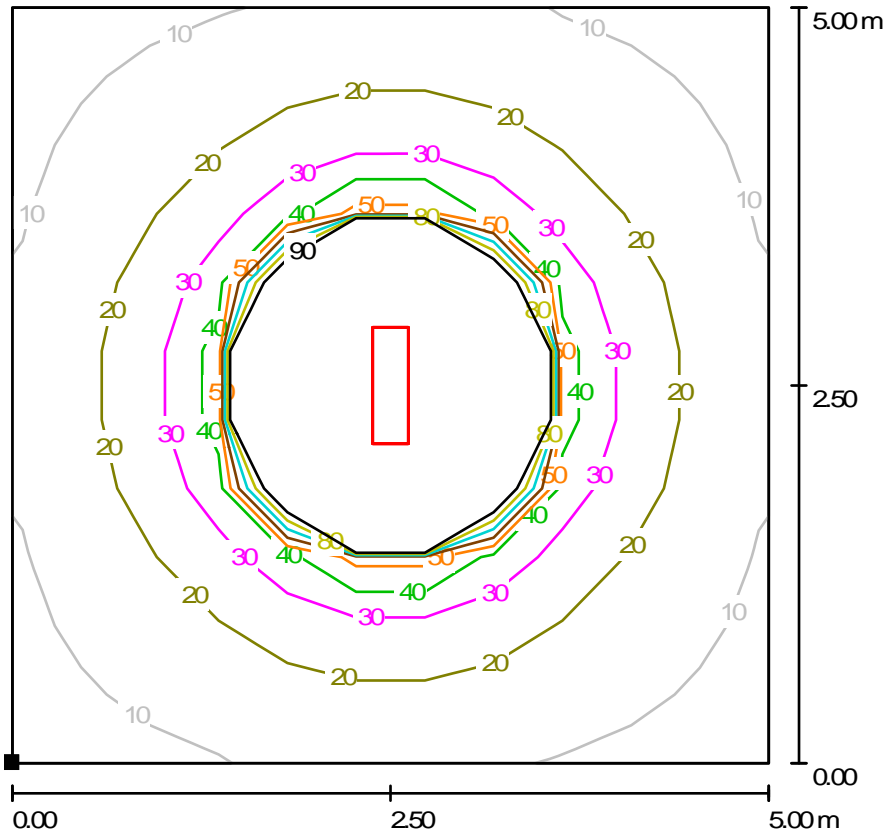
Operator  
Telephone  
Fax  
e-Mail

**Room 1 / False Colour Rendering**



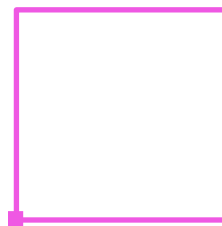
Operator  
Telephone  
Fax  
e-Mail

**Room 1 / Floor / Isolines (E)**



Values in Lux, Scale 1 : 50

Position of surface in room:  
Marked point:  
(0.000 m, 0.000 m, 0.000 m)

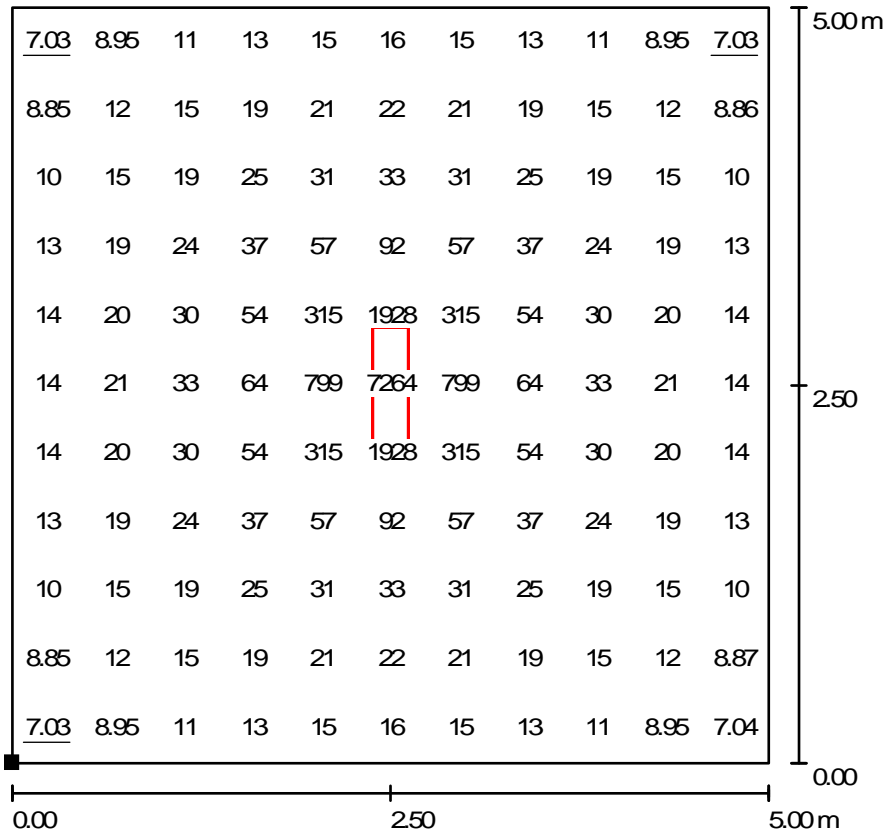


Grid: 11 x 11 Points

$E_{av}$ [lx]	$E_{min}$ [lx]	$E_{max}$ [lx]	$u_0$	$E_{min} / E_{max}$
131	7.03	7292	0.054	0.001

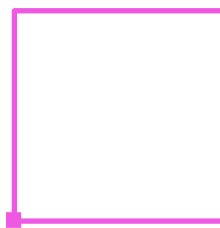
Operator  
Telephone  
Fax  
e-Mail

**Room 1 / Floor / Value Chart (E)**



Values in Lux, Scale 1 : 50

Position of surface in room:  
Marked point:  
(0.000 m, 0.000 m, 0.000 m)



Grid: 11 x 11 Points

$E_{av}$  [lx]  
131

$E_{min}$  [lx]  
7.03

$E_{max}$  [lx]  
7292

$u_0$   
0.054

$E_{min} / E_{max}$   
0.001